

# What is a Native Plant?

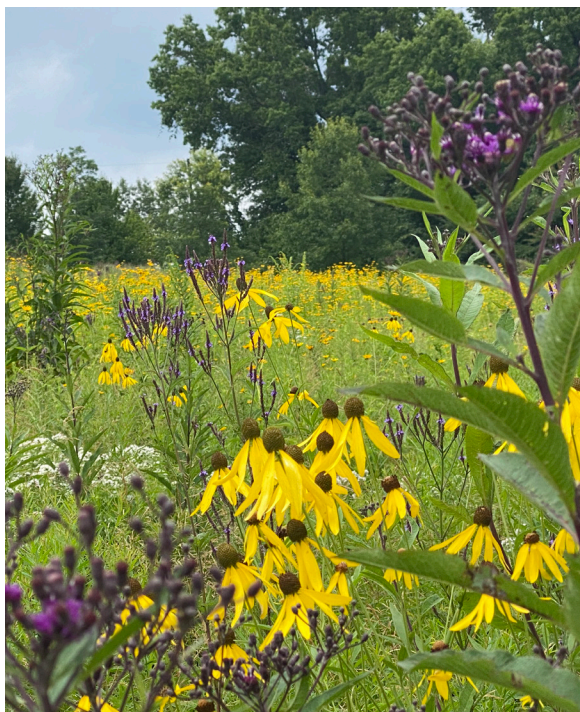
A native plant is one that  
has evolved over thousands of years

In a specific geographic region

Alongside local flora and fauna

Without human intervention

---



Each native plant habitat, including prairies, woodlands, and wetlands, are filled with native plants adapted to growing in these diverse ecosystems.

In specific geographic areas, native plants thrive on local soils with unique water, light, temperature, and growing conditions.



*Aesculus glabra*  
Ohio Buckeye